

SmartApp

One App. All Your Insights. Smarter Decisions.



Overview

SmartApp is an advanced data aggregation and visualization platform designed to unify insights across multiple teams, tools, and workflows. Built for organizations that want to make data-driven decisions without juggling multiple dashboards, SmartApp consolidates information from various sources into a single, intuitive interface. Its flexible visualization capabilities enable teams to uncover trends, track performance, and collaborate effectively in real time.

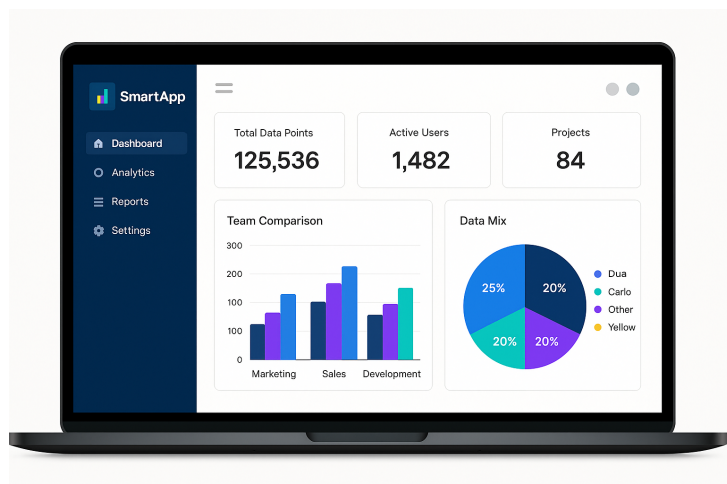
Highlights

Cross-Team Data Unification

SmartApp eliminates silos by combining data from multiple teams and tools into one centralized platform. This unified view helps organizations align on metrics and make better decisions collaboratively.

Dynamic Visualization

Turn complex numbers into clear, interactive visuals that anyone can understand. With SmartApp's flexible dashboard builder, you can easily create charts, graphs, and heatmaps that make insights pop.



SmartApp dashboard is customizable to show the data you're most interested in.

Collaboration-Ready

Teams can share dashboards in real time, add comments, and work together on data-driven strategies. Everyone stays aligned, no matter where they work.

Scalable Architecture

Whether you're a small startup or a large enterprise, SmartApp grows with you. Its robust infrastructure ensures smooth performance, even with massive datasets.

Key Features

Data Aggregation Engine

Connect SmartApp to your CRM, ERP, spreadsheets, and other data sources to bring all your information into a single platform. No more switching between tools or hunting for missing data.

Custom Dashboards

Build your own dashboards with an intuitive drag-and-drop interface. Personalize your views to focus on what matters most — whether that's sales performance, project timelines, or customer feedback.

Real-Time Updates

SmartApp automatically refreshes your data, so your team always has the latest information. This means decisions are based on live insights, not outdated reports.

Role-Based Access Control

Control who sees what with granular permissions. SmartApp ensures that sensitive data is shared only with the right people, helping you stay compliant and secure.

AI-Powered Insights

Let SmartApp do the heavy lifting with built-in analytics that highlight trends, detect anomalies, and even suggest possible actions to take.

Export & Integration

Share findings quickly with stakeholders by exporting dashboards to PDF or CSV, or embedding them directly into other tools like intranets and wikis.

Aspect	SmartApp	Traditional Tools
Data Integration	Connects to multiple sources in one place	Requires switching between tools
Visualization	Interactive, customizable dashboards	Static reports and charts
Collaboration	Real-time sharing & commenting	Manual distribution
Scalability	Handles enterprise data seamlessly	Limited performance with large datasets
Insights	AI-driven anomaly detection & recommendations	Manual analysis required

For more information about SmartApp, go to www.good-software.com/smartapp

Key Benefits

- **Enhanced Decision-Making:** Gain a holistic view of operations, reducing blind spots.
- **Time Savings:** Eliminate manual data collection and reporting.
- **Improved Collaboration:** Foster alignment between teams with shared data views.
- **Greater Agility:** Quickly identify opportunities or issues as they emerge.
- **Better ROI:** Optimize performance by acting on real-time insights.



This page is not part of the template and won't affect your exports.

This content was exported from Confluence using Scroll PDF Exporter

To get the most of this Scroll PDF Exporter template: set up your brand and your logo and brand colors will be used automatically.

- To have this export reflect your brand automatically, [set up your brand](#).
- Want to have more control over how your Confluence content is exported? Take a look at [Scroll Exporter Extensions](#). With [these macros](#) you can insert page breaks, ignore content from your export, and more directly in your Confluence content.
- This template uses [custom placeholders](#) that are set by the content/page properties from the Confluence page template with the keys 'Product name' and 'Tagline'.
- Have suggestions on how to improve our templates or a use case we have not covered? Contact us at support@k15t.com

Page Properties

Product name	SmartApp
Tagline	One App. All Your Insights. Smarter Decisions.